



PRODUCT CATALOGUE
2024

www.atriadesigns.ca



WE CARE



WE INNOVATE



WE DELIVER

WHAT WE STAND FOR



Top quality & durability

We only represent manufacturers that push for the highest quality standards across the global market and maximum lifespan & durability of their products. Additionally, all products we carry are tested and certified by our manufacturer's engineers.



Minimalist design & tailored solutions

All products are tailor made to your application and design needs. We offer varying installation applications, precise sizing (to the mm) with many of our products and a wide array of customization options.



Many years of experience & global recognition

The manufacturers we work with have many years of experience in their respective field and have a strong global presence. This adds to the credibility of the products we offer & expands the range of projects we can undertake.



User friendly & low maintenance

All of our products are designed to be user friendly and require low maintenance, retaining their characteristics for many years, day in and day out, under all weather conditions.



Continuous innovation

All of our manufacturers have an extensive investment in R&D and a tight network of experts who are continuously innovating.



Client support

Our manufacturers offer an excellent, transparent & honest support system (which allows us to better support our clients). They also have drawings and studies openly available to provide.

INDEX

This is an interactive PDF. Click on the headings to go to the desired section.

PRODUCTS

OUTDOOR



SOLAR SHADING



ARCHITECTURAL PRODUCTS

CLADDING



INDEX

This is an interactive PDF. Click on the headings to go to the desired section.

COMPANY

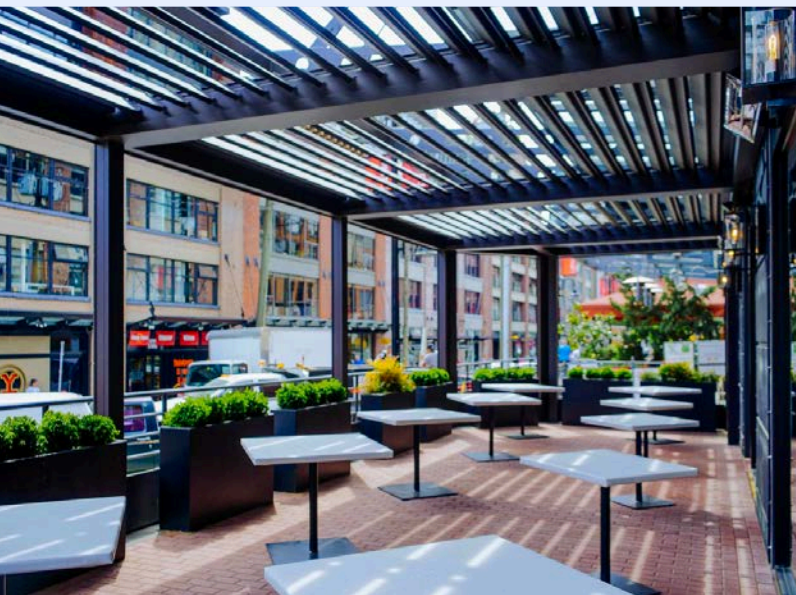
EDUCATION Earn AIBC & IDCEC learning credits.

PORTFOLIO Explore some of our featured projects.

TECHNICAL SUPPORT AutoCAD, BIM, Sketch Up files, detailed specs, certifications, and more.

SUSTAINABILITY How we approach sustainability.

BIOCLIMATIC LOUVERED PERGOLAS



- **Dynamic sun protection**
(bioclimatic)
- **Motorized + weather sensors**
- **Snow load capacity**
- **Models can**
Tilt
Retract
Tilt & retract
- **Fully waterproof**
- **Customizable**
Wide range of colours and finishes
- **Accessories**
Lighting, screens, glasses, heaters etc

[website page](#)



BRANDS WE WORK WITH:

RENSON [BELGIUM]

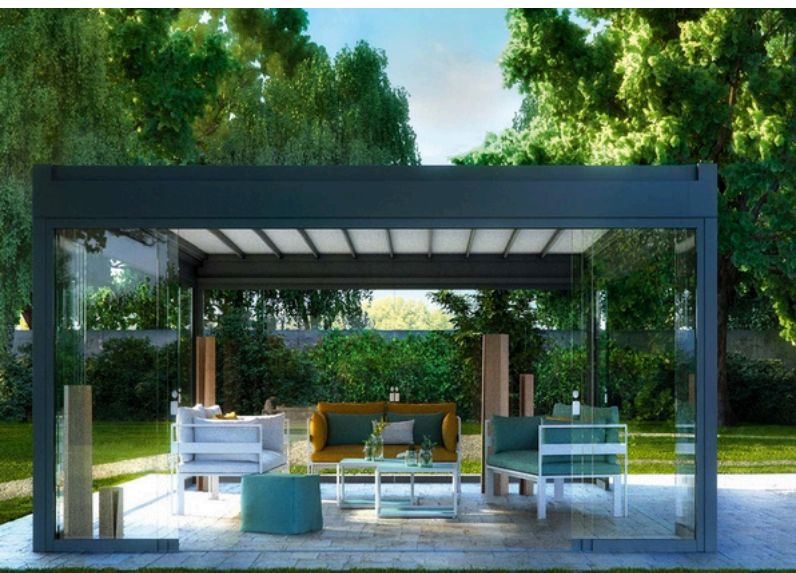
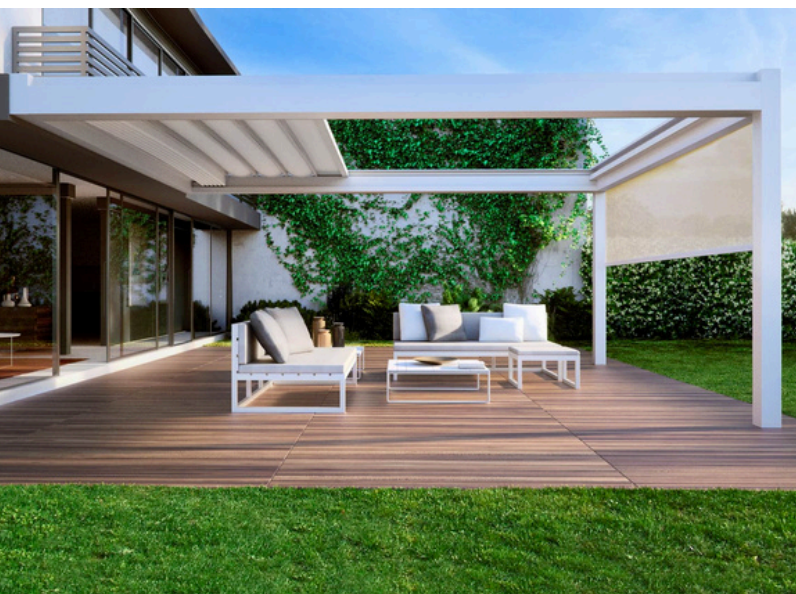
PRATIC [ITALY]

WINSOL [BELGIUM]

ALPHA [GREECE]

CORRADI [USA]

RETRACTABLE PVC PERGOLAS



- **Retractable PVC canopy**
- **Motorized + weather sensors**
- **Sun & rain protection**
- **Fully waterproof**
- **Customizable**
Wide range of colours and finishes
- **Accessories**
Lighting, screens, glasses, heaters etc

[website page](#)



BRANDS WE WORK WITH:

PRATIC [ITALY]

CORRADI [USA]

RETRACTABLE AWNINGS



- **Motorized + weather sensors**
- **Sun protection**
- **Customizable**
Wide range of fabrics, colours and finishes
- **Accessories**
Lighting and/or valance

website page

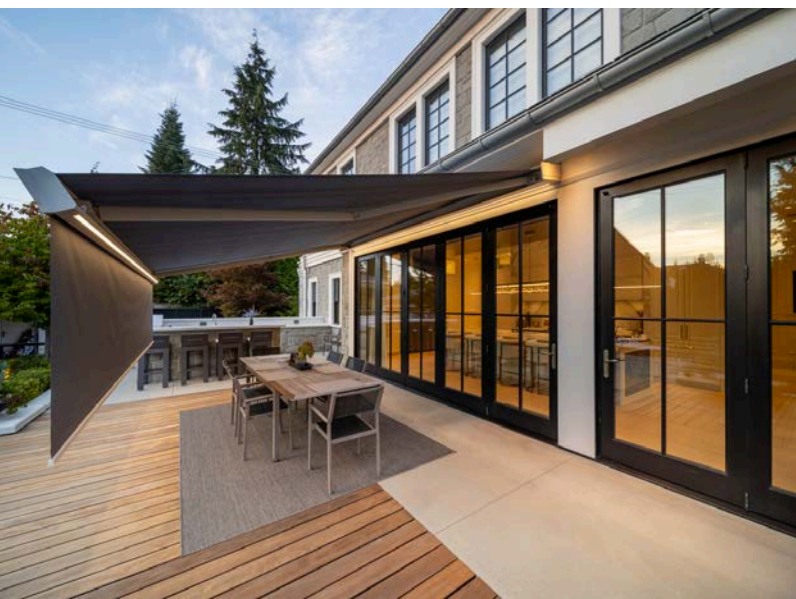


BRANDS WE WORK WITH:

PRATIC [ITALY]

STOBAG [SWITZERLAND]

WINSOL [BELGIUM]



UMBRELLAS



- **Many available designs & sizes**
- **Customizable**
Wide range of fabrics, colours and finishes
- **Multiple fastening types**
Bases, wall mounted, ground socket etc
- **Accessories**
Lighting, gutters, fabric walls etc.
- **Some can be coupled**
2 to 5 canopies for 1 post

[website page](#)



BRANDS WE WORK WITH:

GAGGIO [ITALY]

UMBROSA [BELGIUM]

GLATZ [SWITZERLAND]

PROSTOR [BELGIUM]

FRANKFORD [USA]

SHADEMAKER [USA]

JARDINICO [USA]

OUTDOOR BLINDS



- **Clear PVC vinyl or mesh**
- **Manual or motorized**
- **Customizable**
Wide range of colours, fabrics and finishes
- **Weather protection**
Offers shelter from all weather conditions
- **Smooth operation**
- **Minimal design**
No zips, cords, ropes or wires

[website page](#)



BRANDS WE WORK WITH:

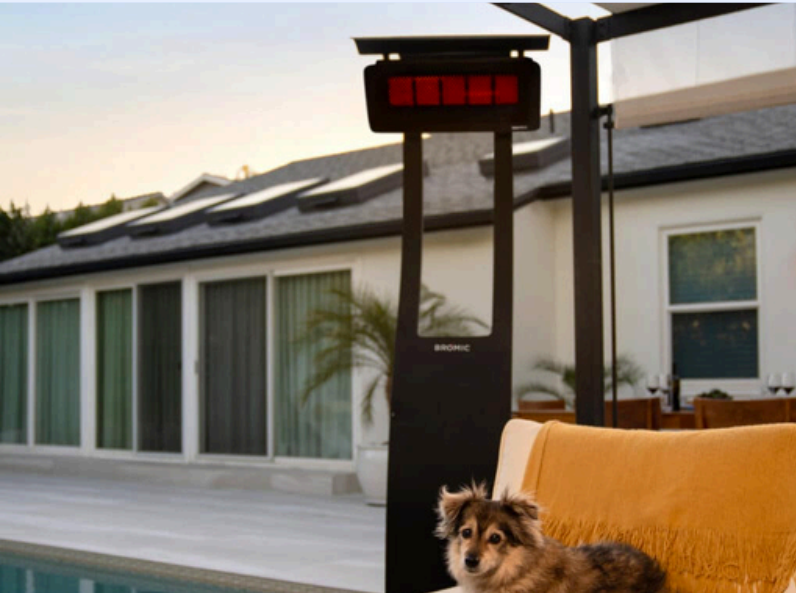
RENSON [BELGIUM]

ZIPTRAK [AUSTRALIA]

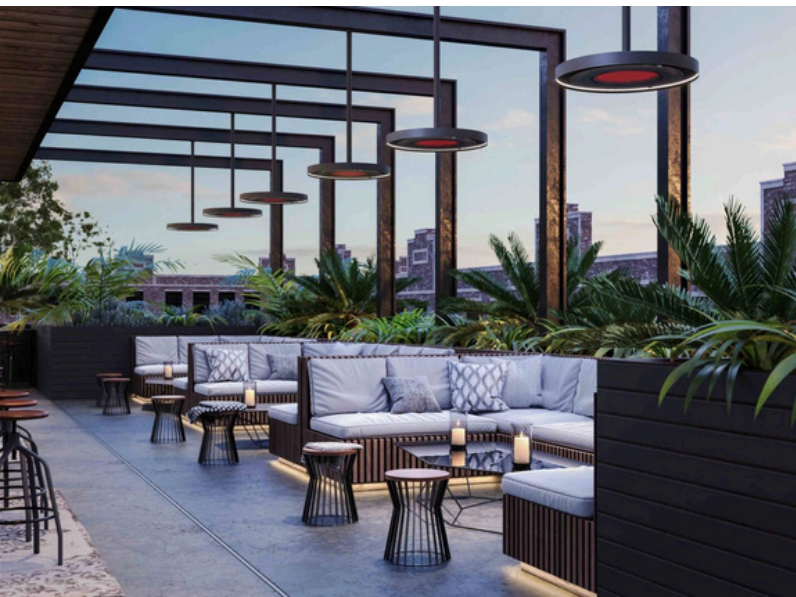
WINSOL [BELGIUM]

HAROL [BELGIUM]

HEATERS



- World leading technology
- Premium quality
- Gas and electric
- Design + functionality
- Surface mounted or portable



[website page](#) 



BRANDS WE WORK WITH:

BROMIC [AUSTRALIA]

HEATSAIL [BELGIUM]

MOTORIZED EXTERNAL SCREENS



FIXSCREENS REGULATE SOLAR HEAT AND PREVENT OVERHEATING
External sun protection cools down interiors by 10°C



- **Sun protection**
Prevent spaces from overheating
- **Energy saving**
Reduce the need of air conditioning
- **Solar powered option**
- **Motorized + weather sensors**
Operable by remote control or home/building automation systems
- **Vertical, horizontal, incline windows**
- **High wind tolerance**
Up to 150km/hr
- **Customizable**
Wide range of installation methods, colours and fabrics
- **Design & functionality**
Minimal impact on the architecture

[website page](#)



BRANDS WE WORK WITH:

RENSON [BELGIUM]

WINSOL [BELGIUM]

HAROL [BELGIUM]

SLIDING PANELS



- **Dynamic sun protection**
- **7 design options**
- **Several sliding options**
fixed, single track, multi track, bi-folding
- **Customizable**
Wide range of sizes & colours
- **High quality materials**
High grade aluminum or wood
- **Flexguide technology**

[website page](#) 



BRANDS WE WORK WITH:

RENSON [BELGIUM]

STRUCTURAL SOLAR SHADING



- **Integrated into the exterior**
Ideal for facades
- **Architectural**
Products have a strong aesthetic appeal
- **Customizable**
Wide range of profiles and colours
- **Fixed or movable**
Static or dynamic sun protection
- **High quality materials**
High grade aluminum



[website page](#)

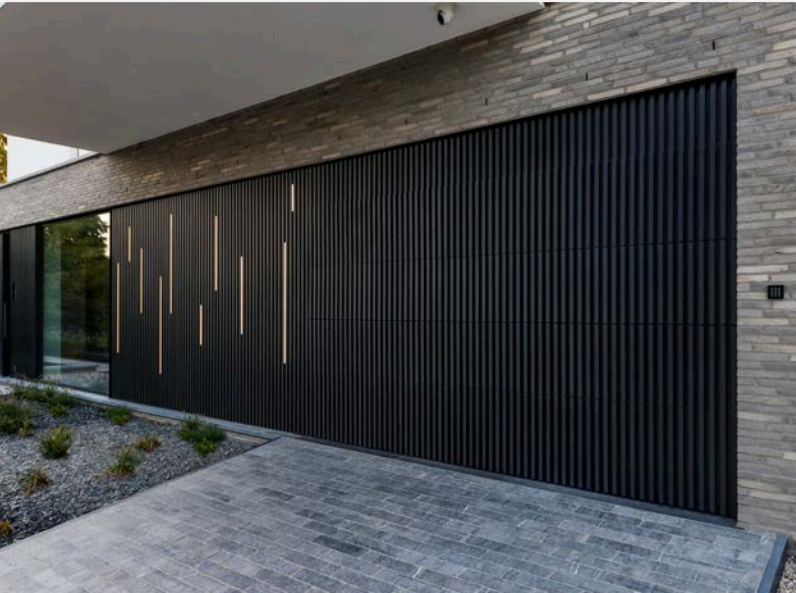


BRANDS WE WORK WITH:

RENSON [BELGIUM]



CLADDING



- **Vertical or horizontal slats**
- **Different design options**
- **Sleek, modern look**
- **Various colours**
All RAL colours
- **Flexible slat length & spacing, tailored configurations**
- **Weather resistant, low maintenance**
- **Robust construction, long lasting appearance**
- **Accessories**
Lighting & wooden strips [vertical]
- **Sustainable**
Aluminum is 100% recyclable

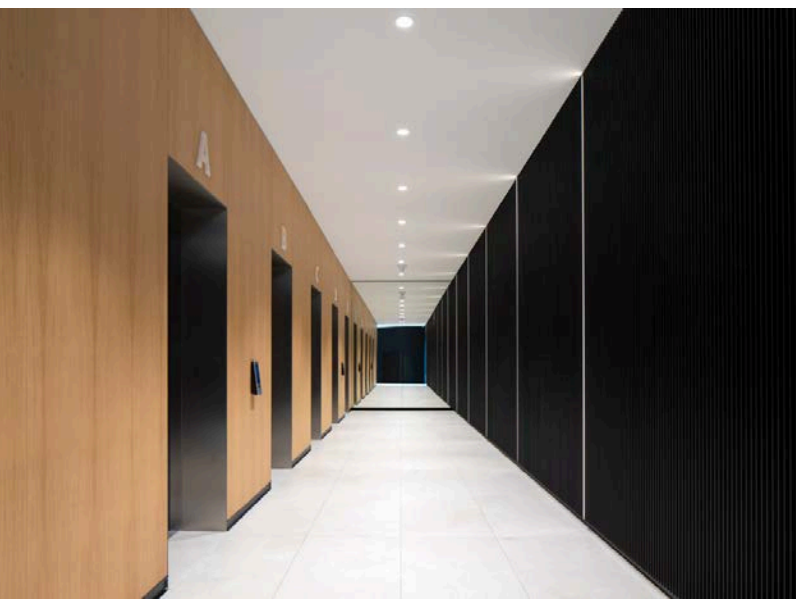


[website page](#)



BRANDS WE WORK WITH:

RENSON [BELGIUM]



EDUCATION



get credit for what you've learned

Atria Designs is a registered continuing education provider and offers professional development webinars. We offer both group and individual webinars as requested.

Explore our currently offered online courses and book a course for yourself or your team:

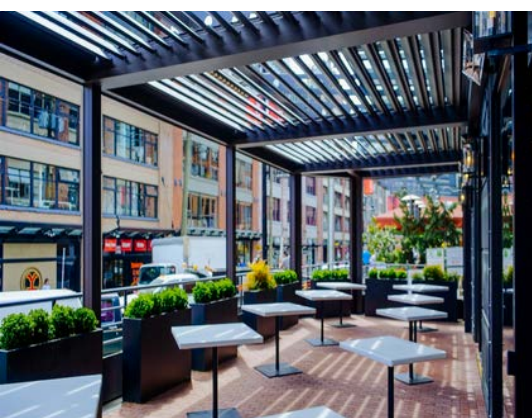
www.atriadesigns.ca/education

If you would like to book an online or in-person presentation without the need for learning credits, please contact education@atriadesigns.ca.

ELISA STEAKHOUSE

SCOPE

Our team installed 3 custom Camargue patio covers, equipped with weather protection screens and heaters. These integrated screens feature crystal windows, ensuring guests can enjoy the patio year-round without sacrificing their view of Yaletown's vibrant street life. The Camargue louvred pergola seamlessly complements Elisa's aesthetic with its top-notch finish and minimalist, elegant design.



PURE BLISS

SCOPE

Set on a hill, this home now features an impressive outdoor space that extends from the grand kitchen. We installed two Camargue pergolas with integrated crystal-clear screens, plus a third pergola over the BBQ area. The result is a versatile and inviting area where the owners can comfortably enjoy their outdoor space, protected from sun, rain, and insects.



ARBUTUS CLUB

SCOPE

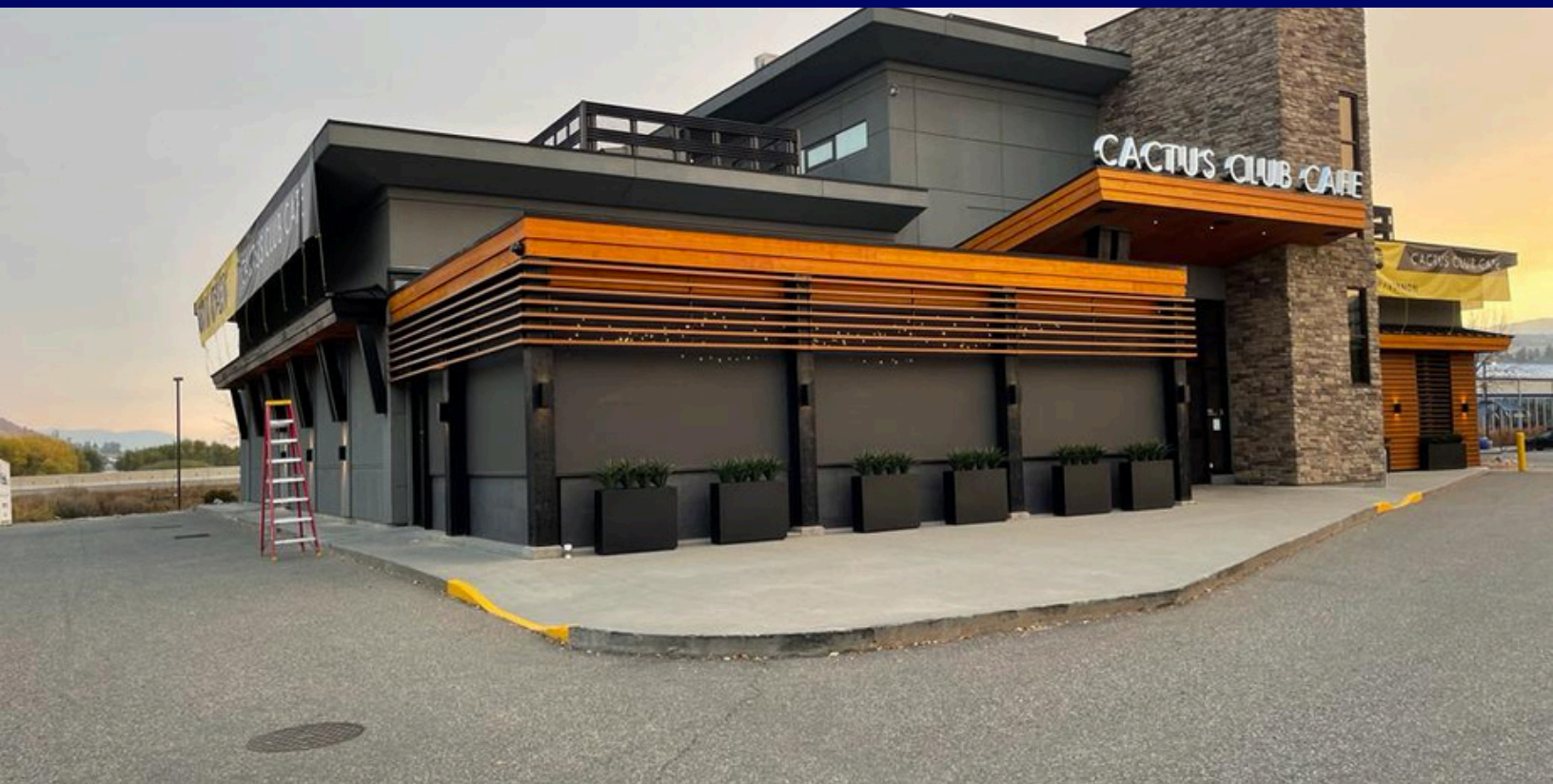
At the Arbutus Club, The Bistro's outdoor patio overlooks the pool and tennis courts. To ensure year-round comfort for guests, we installed three Camargue louvered bioclimatic pergolas with lighting and heating. The space is enclosed with a fixed tempered glass wall on one side and sliding glass doors on three sides, with a retractable screen on the south side to block intense sunlight. This provides a versatile, weather-protected patio where guests can enjoy the outdoor ambiance in any season.



CACTUS CLUB, VERNON

SCOPE

Driven by Cactus Club Restaurants' dedication to an exceptional dining experience, the goal was to create an adaptable outdoor space, ensuring comfort regardless of weather conditions. The challenge was to provide shelter from the sun, wind, and rain while maintaining an optimal temperature. To meet these needs, we chose Renson Fixscreen Freestanding, a solution that provides functionality and aesthetics.





SEE ALL PROJECTS

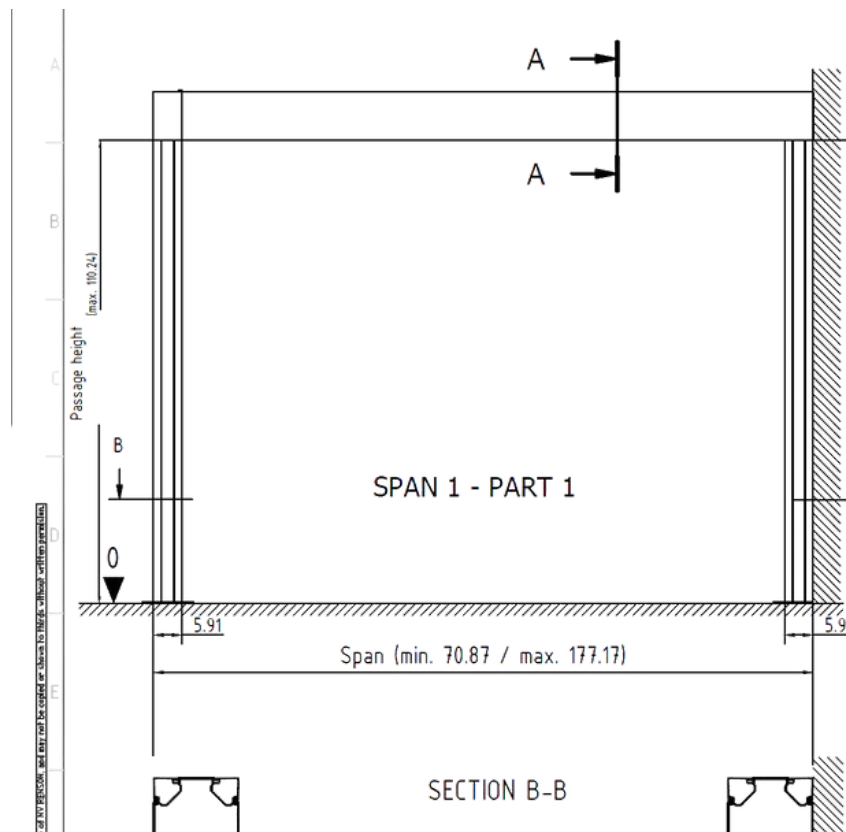
website page





WE PROVIDE STRONG TECHNICAL SUPPORT

AutoCAD, BIM, Sketch Up files, detailed specs, certifications,
and more.





**SMALL STEPS
FOR
A BETTER LIFE**

At Atria Designs, we believe that sustainability starts with small, thoughtful choices. Living comfortably means creating spaces that not only serve the present but also protect the planet for future generations. That's why we partner with manufacturers that are dedicated to innovation and sustainability—investing in net-zero emission facilities, recyclable materials, and energy-efficient solutions.

Our products reflect this commitment, offering smart designs that enhance both indoor and outdoor environments while minimizing environmental impact.

Together, we can build a healthier, more sustainable world, one thoughtful step at a time.



www.atriadesigns.ca

604-428-1818

sales@atriadesigns.ca